

# POWER METER BROADCAST



## + MAIN FEATURES

- 24/7 monitoring of RF-System chain: Combiner, Patch Panel, Main Feeder or Antenna
- Real time Return Loss/VSWR and True RMS power measurement
- Frequency range: FM, DAB and TV
- Trend curves for True RMS power and Return Loss/VSWR with configurable warning and alarm thresholds
- Front Panel Display: True RMS Power and Return Loss/VSWR
- RFHAWKEYE compatible

---

### General

Dimension	19" sub-rack – 1HU / H44 x W483 x D220mm
RF interfaces	SMA F-Connectors -2-4-6-8
Data Interface	1 x LAN
Output	4 Relays-SPST
Display	Front panel – 2 lines
Operating Temp	-5 to 45 °C (ETSI EN 300 019-2-3)
Safety	EN60950-1 – EN61326-1

---

## Power Measurement

Max. Input Power	23 dBm @ SMA ports
Dynamic range	60 dB
Type of measurement	True RMS
RF Accuracy	0.5 dB

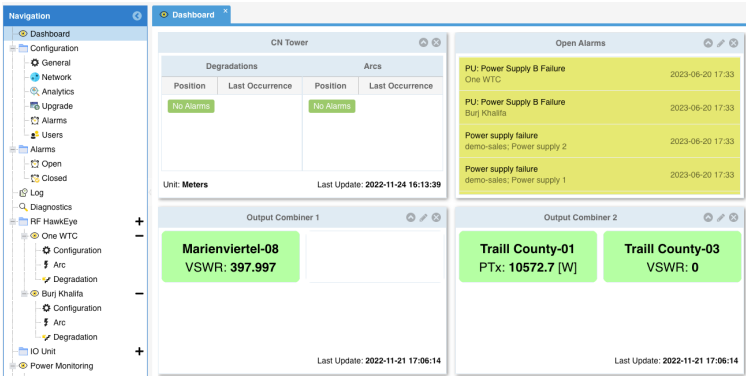
## System

Protocols	SNMP v2c, SNMP v3 Agent, Http/Https web interface
Power Supply	1 x AC 90 ...264V, 47....63Hz – IEC
Weight	1.5 kg box.



P/N: PMB-04

## Web GUI with dashboard



## Version

DAC Part Number	Number of SMA ports
PMB-02	2
PMB-04	4
PMB-06	6
PMB-08	8